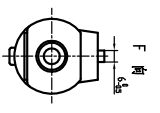
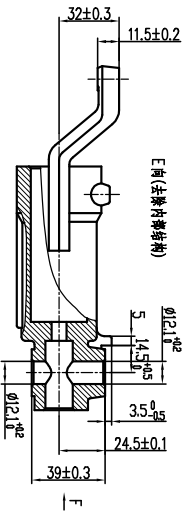
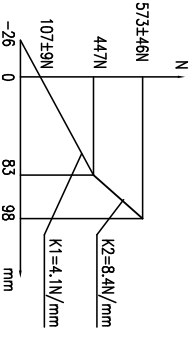
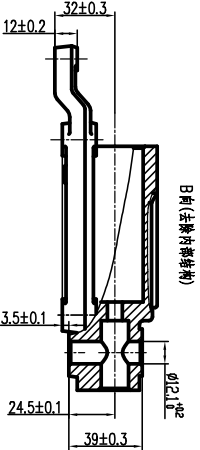
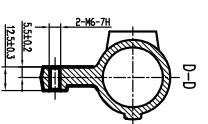
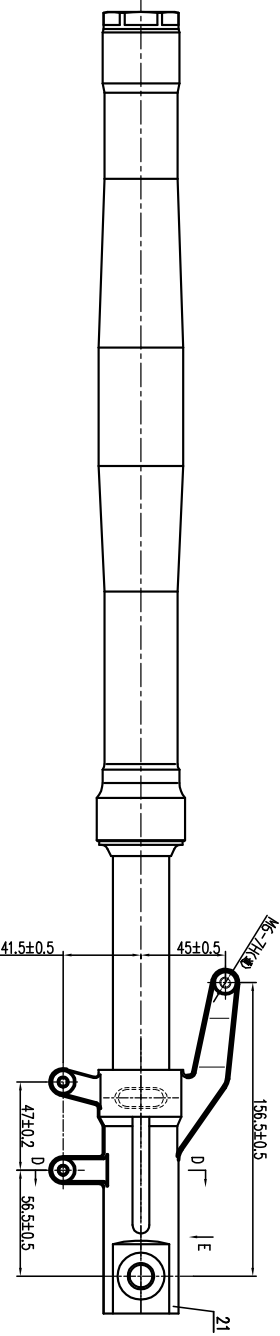
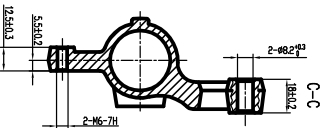
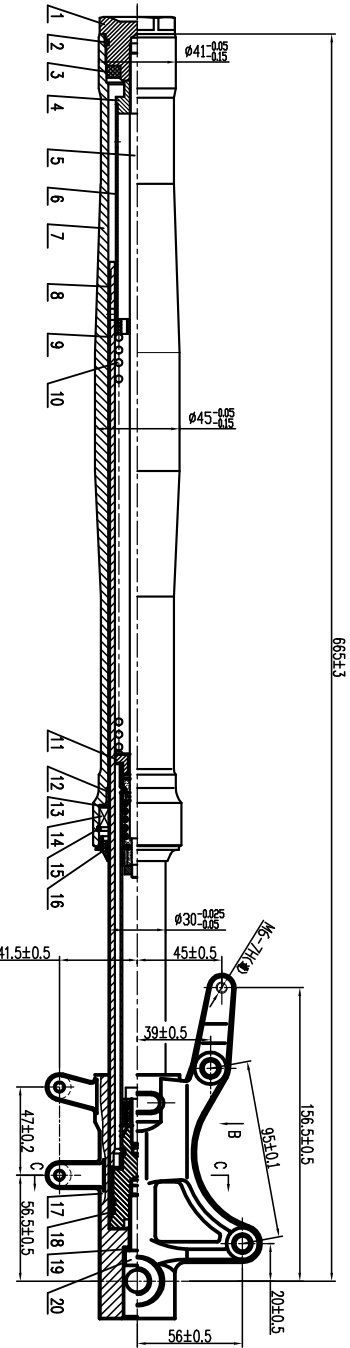


654.3



### 技术要求

- 1、装配前各零部件应清洗干净;
- 2、减震器内注入160±2 ml专用减震油;
- 3、在v=0.5m/s, S=50m, T=20±2° C条件下阻尼力值为P=150±45N, P<sub>Y</sub><80N;
- 4、装配件号14及件号16时应在其唇口部位均匀涂抹一层锂基润滑脂;
- 5、在装配件1和件4、堵头和前叉管时应在螺纹处涂抹适量的厌氧胶, 其拧紧力矩为15~25N.m;
- 6、整体抗拉强度不小于12KN;
- 7、外观质量: 不得有脱胶、脱漆、磕碰划伤等缺陷存在。

21	LY100.Z100-16	左下接头	AC4B/AC2B	1	黑色
20	GB70-85	螺帽M8X30	35	2	彩锌
19	GB/T 93-1997	弹簧8	35	2	彩锌
18	GB34521-82	O形圈22.4XØ2.65	T普康耐-2HC4-543-67	4	黑色
17	LY100.Z100-15	右下接头	AC4B/AC2B	1	黑色

序号	代号	名称	材料	数量	备注
16	LY100.Z100-14	防尘盖	XA17453-#6/72811-1996	2	
15	LY100.130-10	钢丝挡圈	65Mn	2	
14	LY100.Z100-13	油封	XA17453-#6/72811-1996	2	
13	LY100.Z100-12	油封垫圈	15	2	
12	LY100.0010-04	轴套	SF-1	2	
11	LY100.Z100-11	弹簧座	Q235-A	2	
10	LY100.Z100-10	减震弹簧	65Mn	2	
9	LY100.Z100-09C	前叉管	精制管45	2	
8	LY100.Z100-08	活塞环	SF-1	2	
7	LY100.Z100-07	导向筒	6061-GB/T3190-1996	2	精定金黄LY02#
6	LY100.Z100-06A	支撑套组件		2	
5	LY100.Z100-05A	芯轴组件		2	
4	LY100.Z100-04	锁紧螺母	35	2	
3	LY100.Z100-03	缓冲胶垫	聚氨酯橡胶	2	
2	LY100.G020-02	O形圈30XØ2.65	T普康耐-2HC4-543-67	2	
1	LY100.Z150-01	端盖		2	黑色

### 总成装配图

LY100.Z150-00  
恒胜HS125-4S本田家摩托车2016